

Prepared and Written by

Tak Horiuchi

Total Computing Solutions of America, Inc.

Date: March 27, 2007

0. Outline

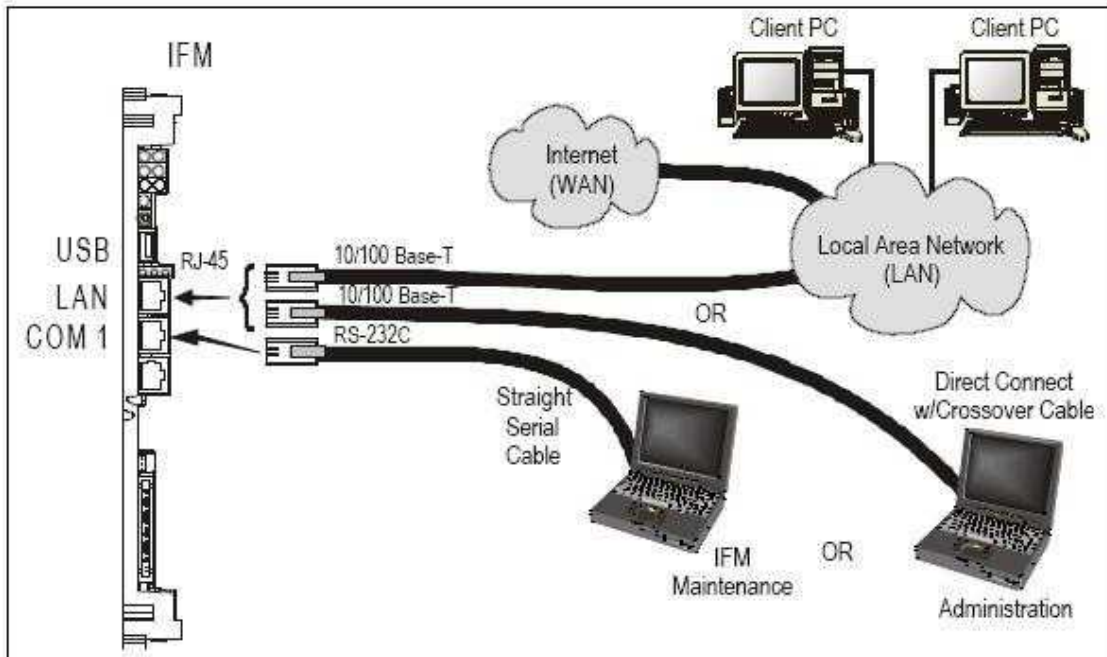
This document shows the procedure to update the Daylight Saving Time (DST) of WinNT IFM.

1. Preparation
2. Download Daylight Saving Time (DST) Tool from Microsoft
3. Updating DST
4. Confirming the Update

1. Preparation

Please make sure IFM is working on WinNT. Have your PC or Laptop ready to connect to IFM using NetMeeting. This document does not describe how to connect your host PC or Laptop to IFM in detail. If you need further assistance on how to establish connection between IFM and host PC or Laptop, please contact Panasonic Technical Support Team.

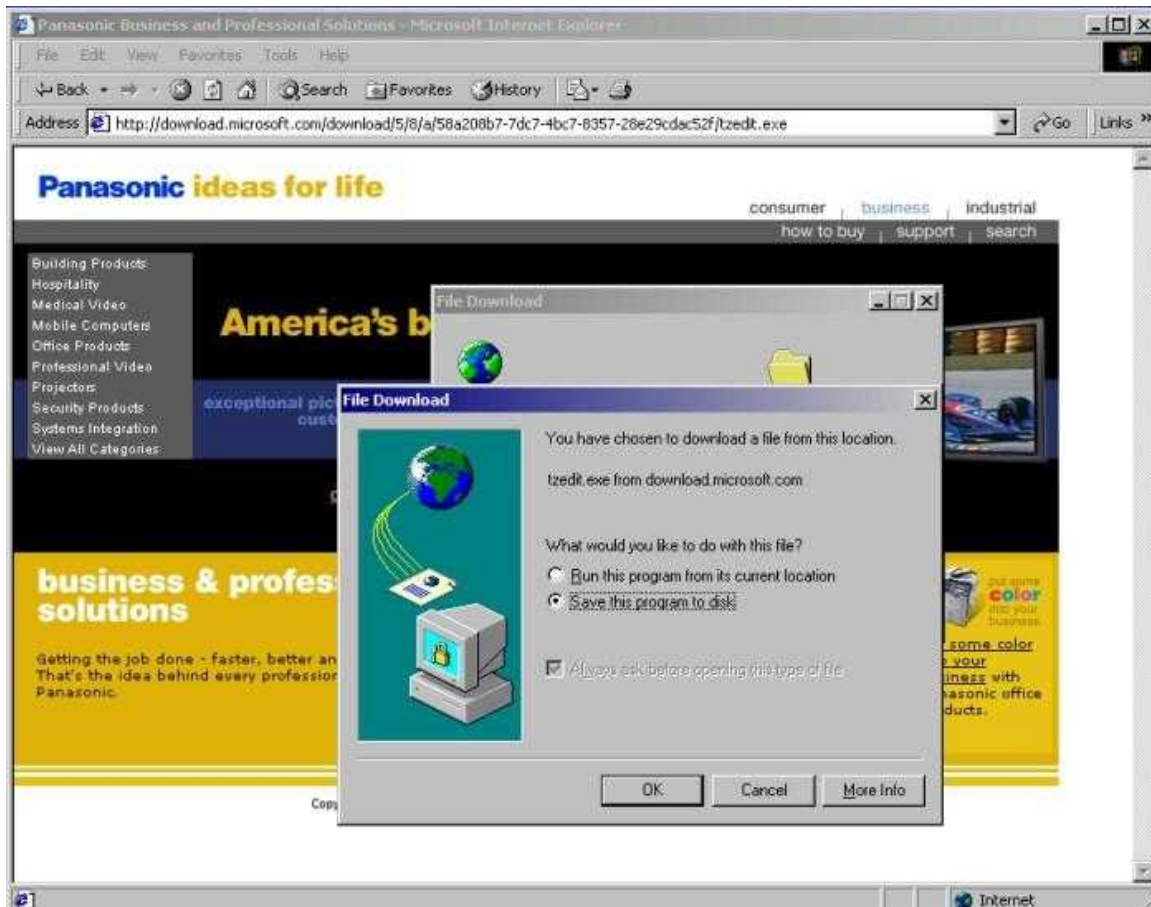
- a. Before performing procedure #2, your PC or Laptop must have access to the Internet in order to download appropriate Daylight Time Saving tool from Microsoft.
- b. In order to advance to procedure #3, connect the Courier IFM Card to your PC using *one* of the three methods shown in the following figure. Once again, details are not provided here, but if you need further assistance, please contact Panasonic Technical Support Team.



2. Download Daylight Saving Time (DST) Tool from Microsoft

In order to update DST, you need to download official tool from Microsoft. Please make sure your PC or Laptop is connected to the Internet.

1. Access Microsoft URL <http://download.microsoft.com/download/5/8/a/58a208b7-7dc7-4bc7-8357-28e29cdac52f/tzedit.exe>

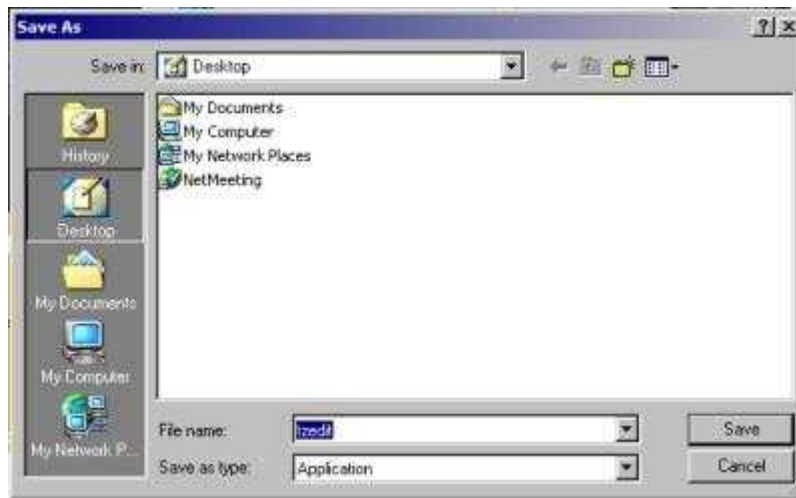


You can see the pop up window to advance downloading.

NOTES:

* At the time of preparing this document, the URL described above was working. Microsoft may change the above-mentioned URL link at any time, which is out of our control. But, if you encounter such problem, you may visit official Microsoft site and find the DST tool (tzedit.exe) to update new DST.

2. Save the file in your PC or Laptop in the location of your convenience. (We would recommend saving on your desktop.)



3. Unzip the downloaded file. You can see 2 files as follows.

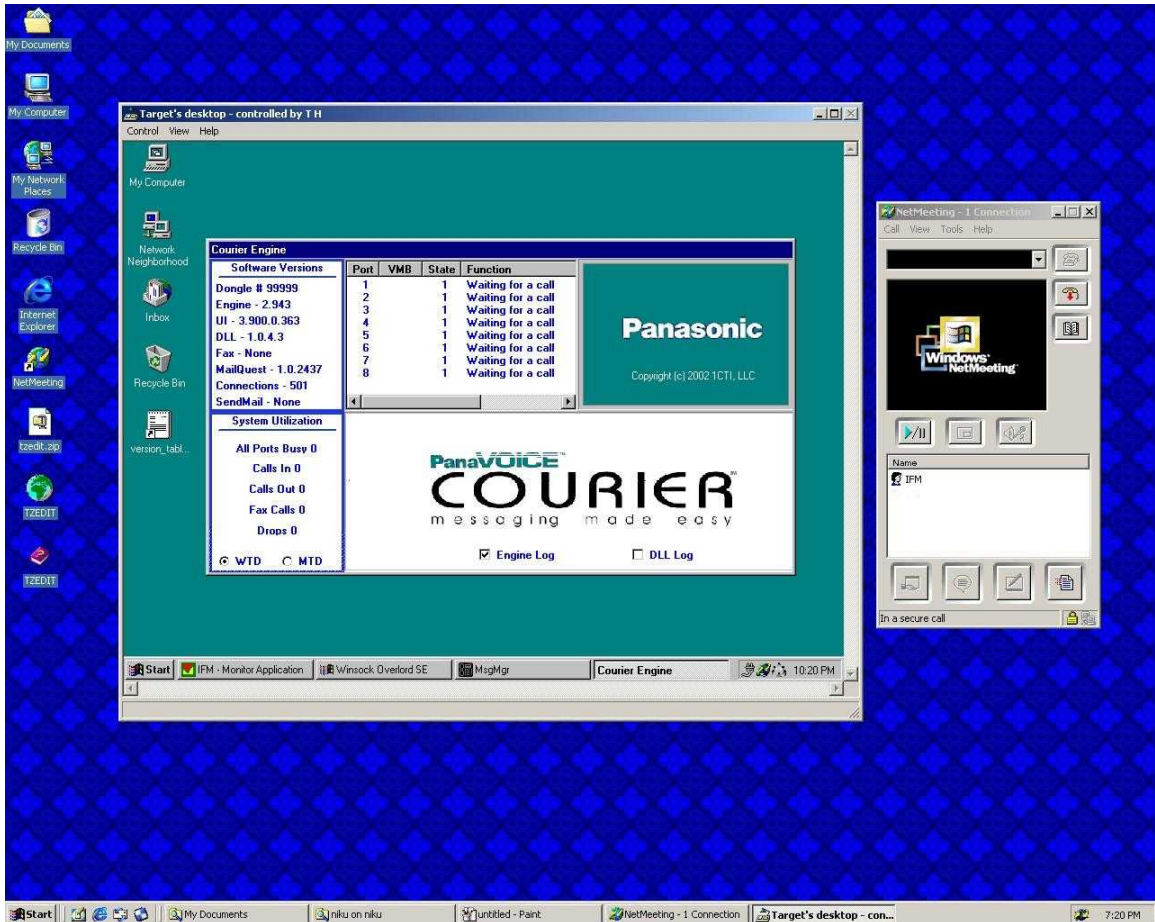


The globe icon "TZEDIT" is the executable file.

3. Updating DST

Please make sure that your PC is connected to IFM properly.

1. Connect your PC to IFM by using NetMeeting.



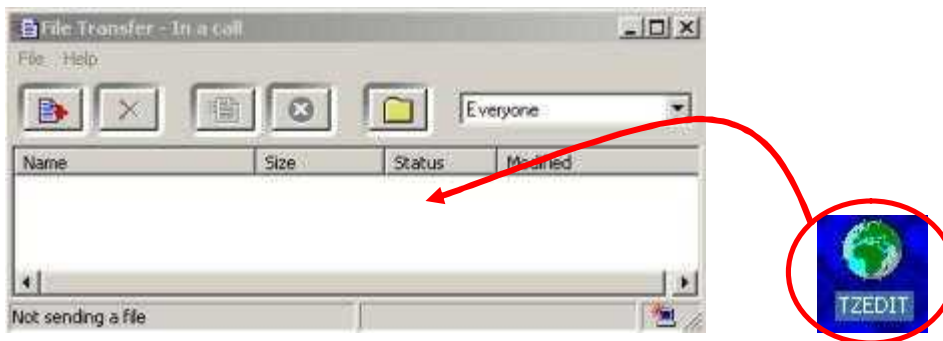
2. Click Upload button on your NetMeeting window to upload TZEDIT to the IFM.



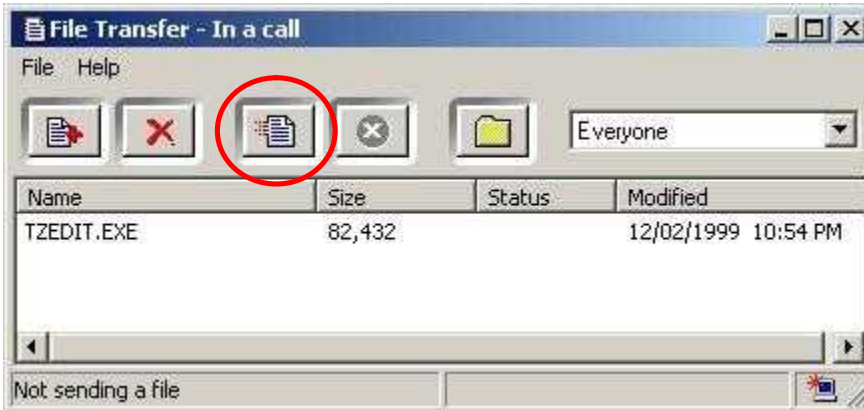
You can see the following File Transfer window.



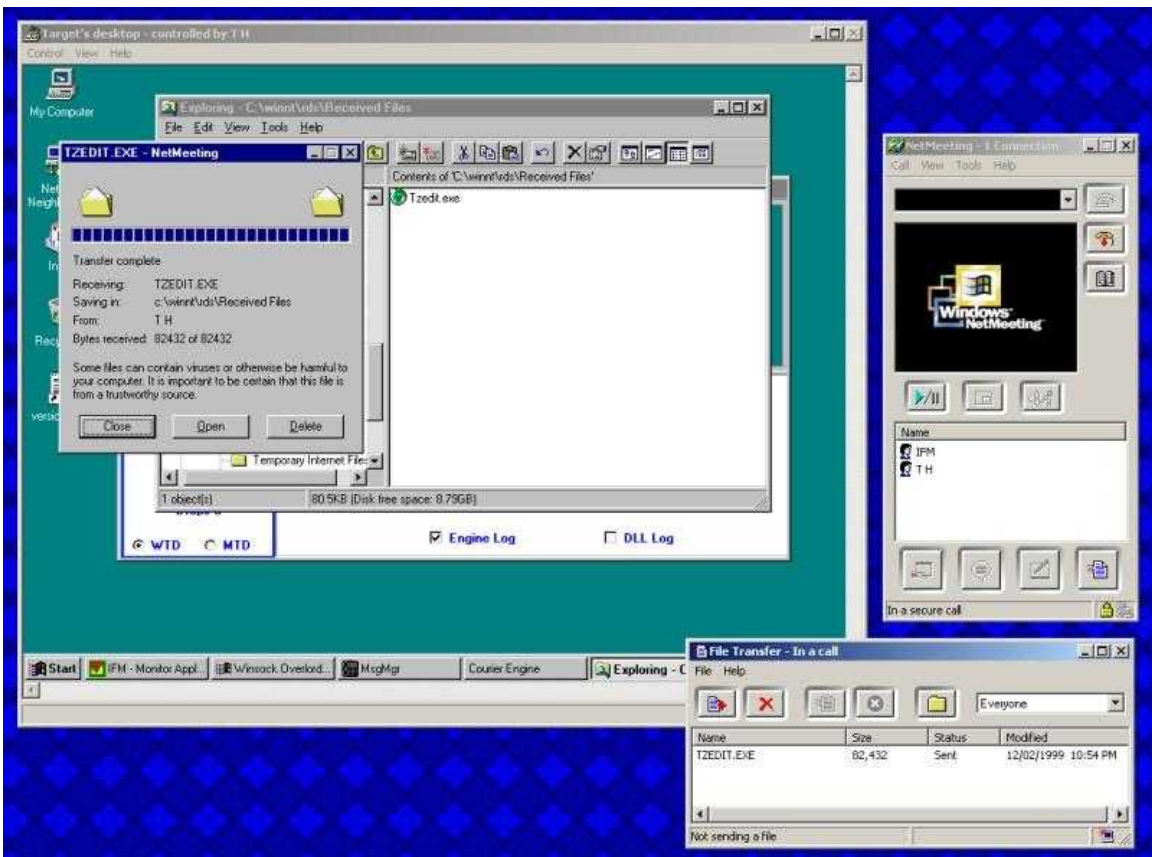
3. Drag and drop the TZEDIT file onto the File Transfer window.



4. Click transmission button on the File transfer window.



You can confirm progress on your window as follows.

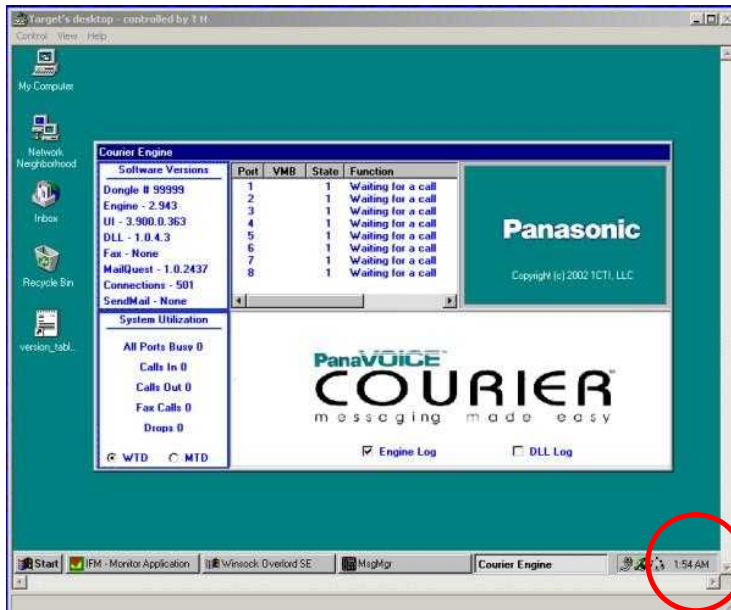


5. Please confirm that the file transfer has completed and saved in IFM in the folder “C:\winnt\rd\Received File”.

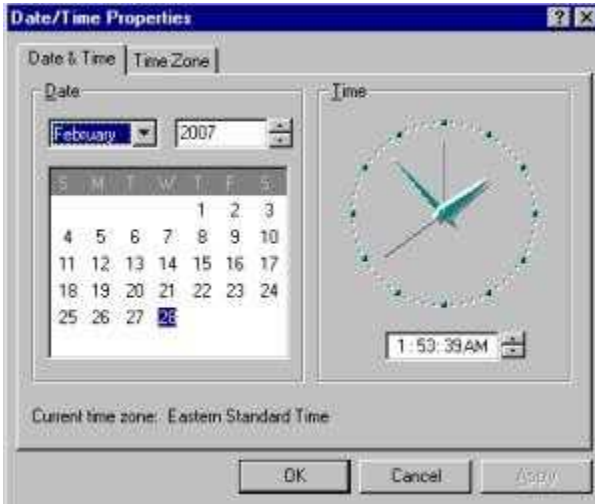


After completing the file transfer, “Tzedit.exe” file will appear as shown in above window.

6. Double click on the time of the IFM task bar in order to confirm current time of the IFM

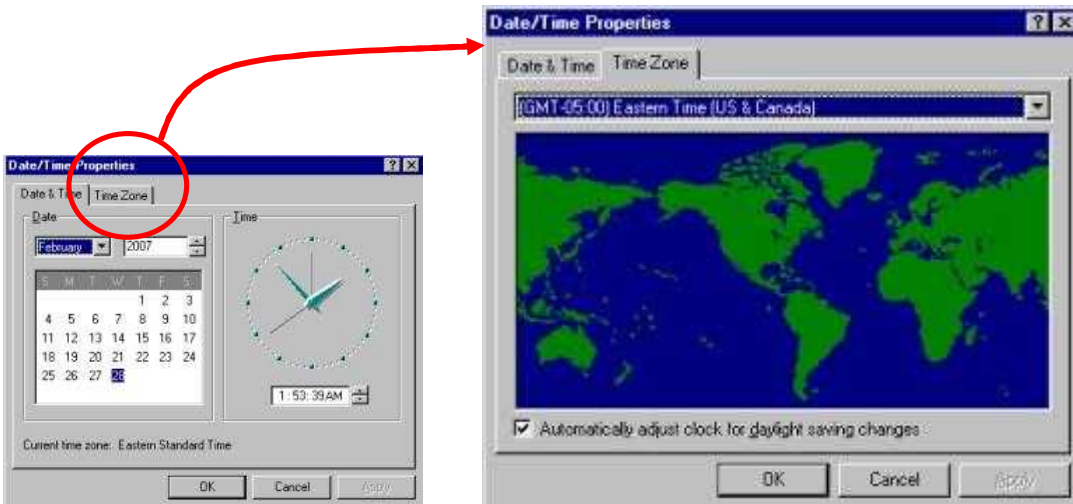


The following Date/Time Properties window will pop up.



* Please confirm the current time according to the time zone you are in.

7. Select "Time Zone" tab to confirm proper settings of your Time zone.



* Please confirm the time zone settings. Also, make sure "Automatically adjust clock for daylight saving changes" check box is "CHECKED".

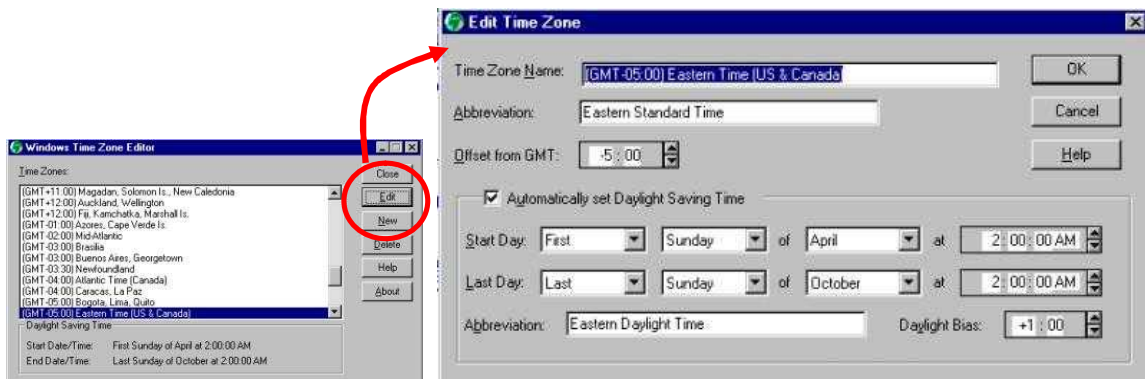
8. Execute "Tzedit.exe" from the folder in IFM. ("C:\winnt\rd\Received File".)



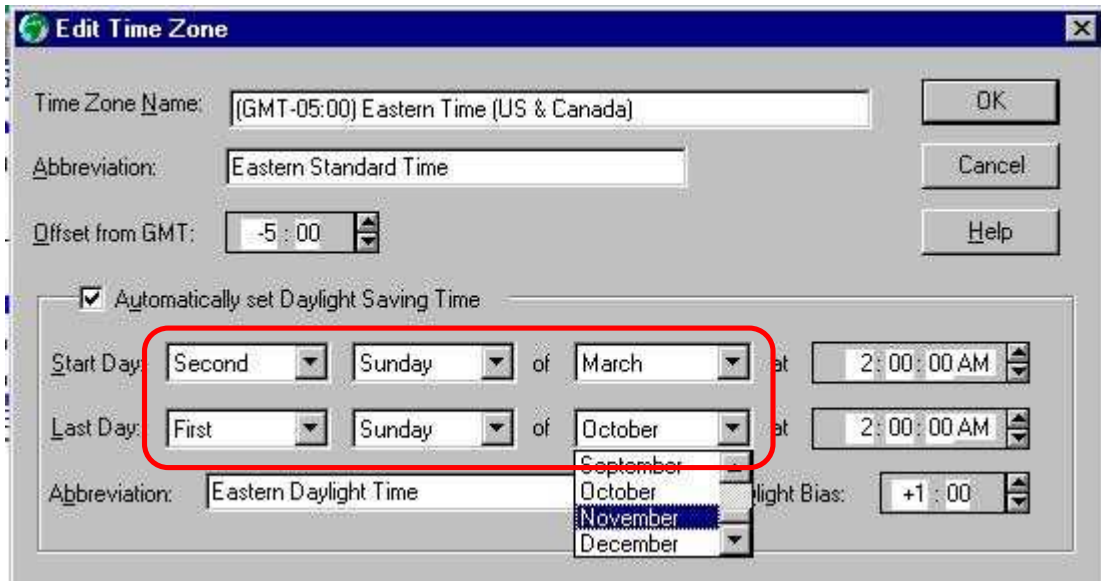
The above window comes up. Then confirm proper time zone selected.

* If time zone is not selected or highlighted according to the time zone you are in, you can select the correct time zone at this time.

9. Click Edit button

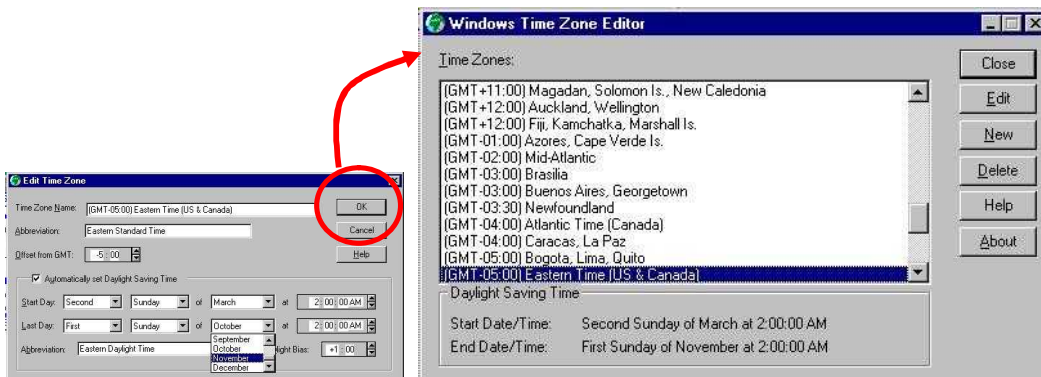


10. Set proper Daylight Saving Time as shown below.

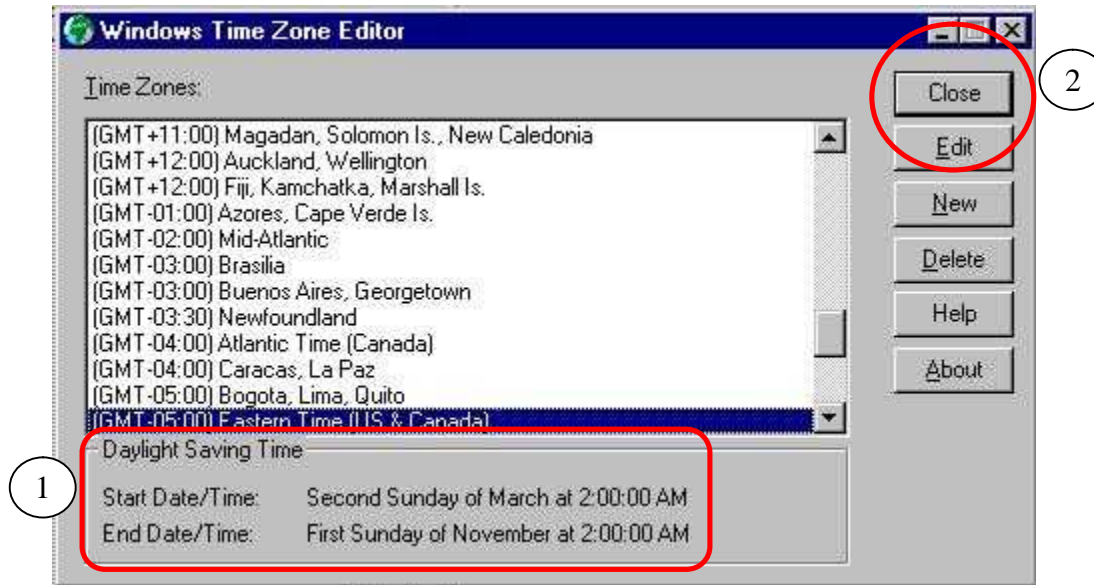


* As of 2006, daylight time begins in the United States on the first Sunday in April and ends on the last Sunday in October. Starting in March 2007, daylight time will begin on the second Sunday in March and end on the first Sunday in November.

11. Click OK button.



12. Confirm proper settings, then Click Close button

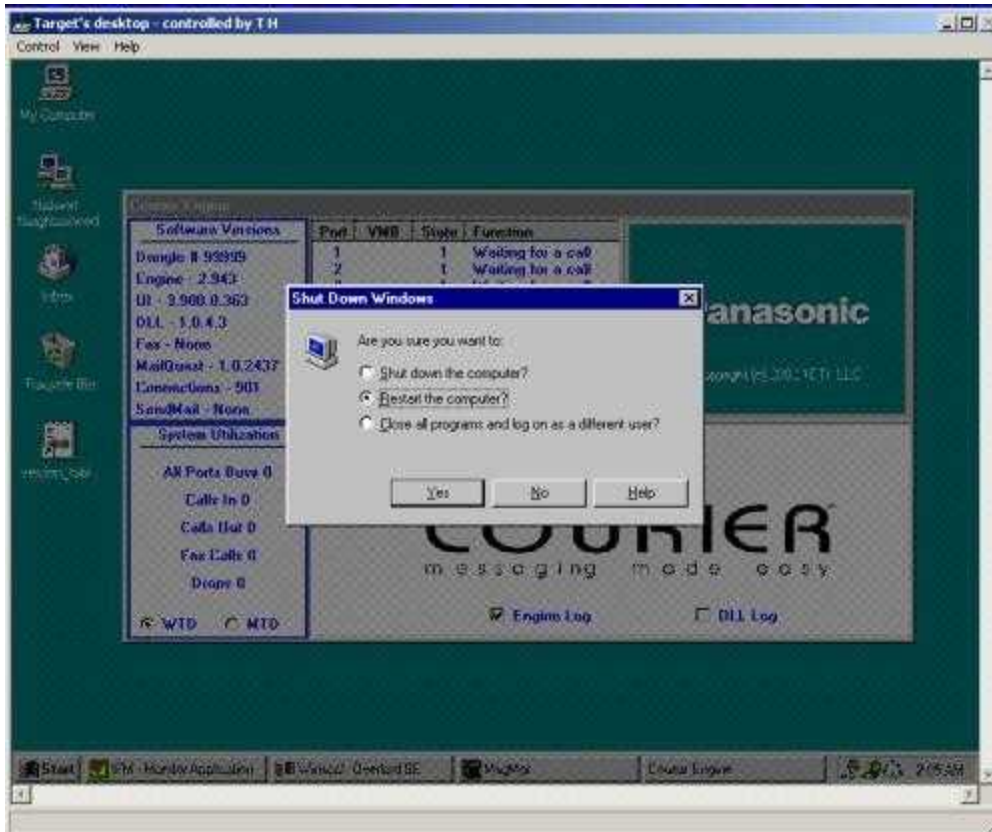


* If it is not correct, go back to #9.

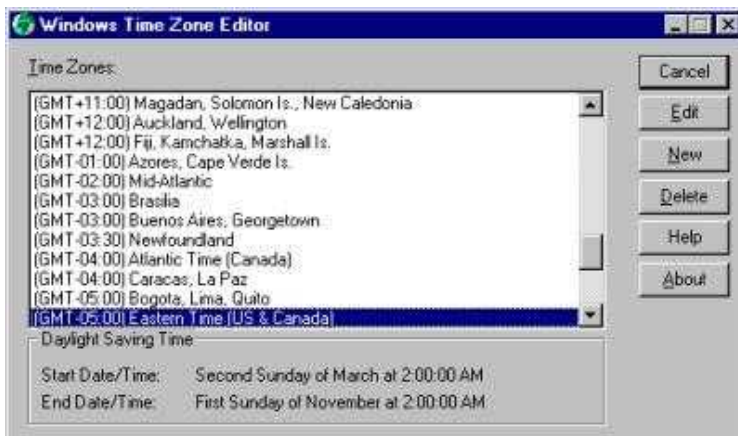
4. Confirming the Update

You should reconfirm the settings after rebooting the IFM.

1. After the update, IFM needs to be rebooted. Please reboot the IFM.



2. Connect your PC to IFM by using NetMeeting again
3. Execute "Tzedit.exe" in the uploading folder of IFM again.
4. You can confirm the new settings.



5. Cancel the window. Now upgrade is completed. If you have any questions, call Panasonic Technical Support Team.