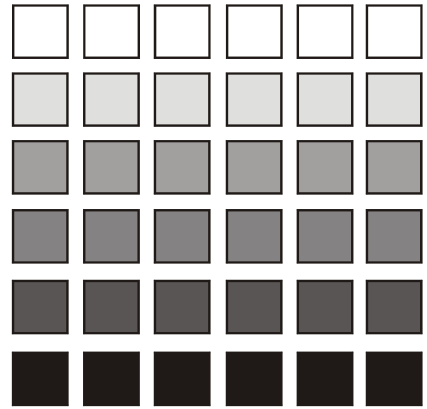


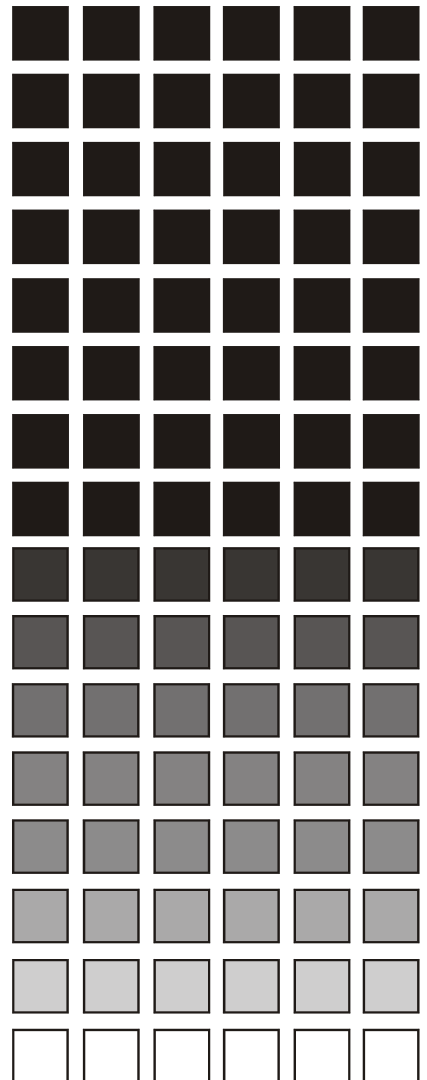
Panasonic[®]

DBS 576
Digital Business System

Reference Manual
Supports DBS 576 & 576HD



**Integrated Feature Module (IFM)
External Modem Kit
VB-44191EML**



The contents of this document are subject to change without notice and do not constitute a commitment on the part of Panasonic Telecommunication Systems Company (PTSC). Every effort has been made to ensure the accuracy of this document. However, due to ongoing product improvements and revisions, PTSC cannot guarantee the accuracy of printed material after the date of publication, nor can it accept responsibility for errors or omissions. PTSC will update and revise this document as needed.

The software and hardware described in this document may be used or copied only in accordance with the terms of the license pertaining to said software or hardware.

© 2002 by Panasonic Telecommunication Systems Company (PTSC)

All rights reserved.

Zoom is a registered trademark of Zoom Telephonics, Inc.
Windows and Explorer are registered trademarks of Microsoft Corporation

Overview

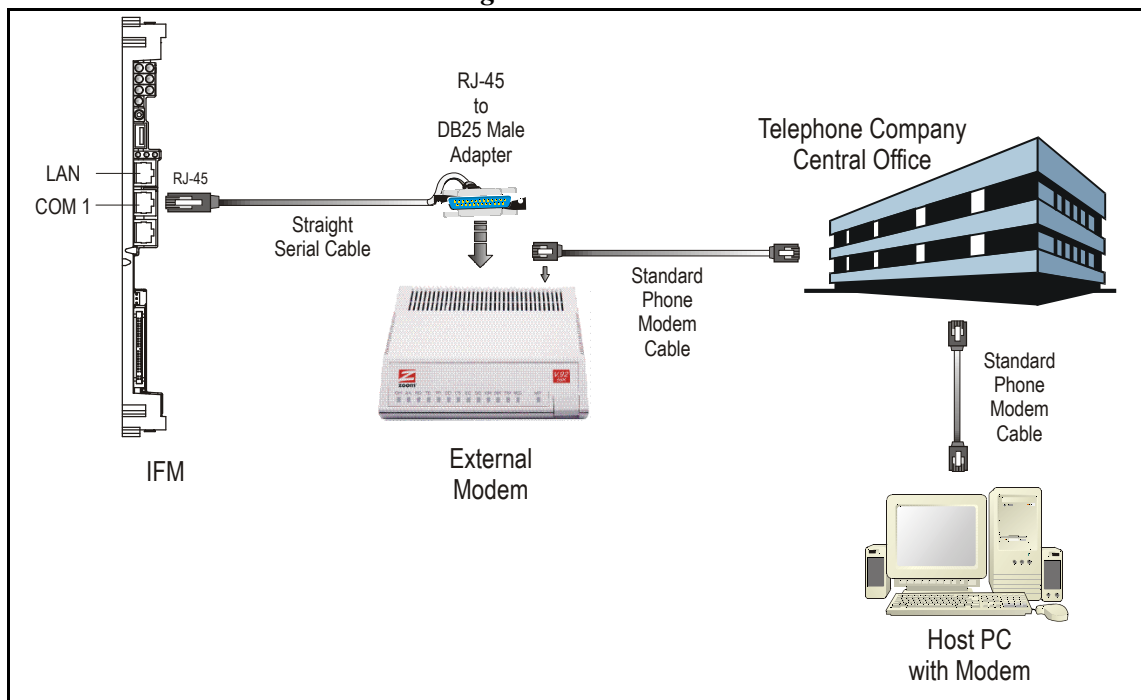
The VB-44191EML IFM External Modem Kit provides the equipment you need to successfully connect your host PC to the IFM by way of an external dial-up modem. This kit includes all of the following items:

Item	Description
Modem	ZOOM [®] /Fax Modem 56K External Model 2949
Cable	Standard Serial Cable, 8-conductor straight connect
Cable Adapter	RJ-45 female to DB25 male

Connecting Your Kit

Prepare the VB-44191EML kit items for connection as shown below in Figure 1:

Figure 1. VB-44191EML Connection Diagram



1. With the WEB GUI, click **SYSTEM SETTINGS**, **Connection Mode**, and select the **Remote Mode** checkbox.
2. Connect one end of the Straight Serial Cable RJ-45 plug to **COM 1** on the IFM.
3. Connect the opposite end to the Modem using the RJ-45-to-DB25 Adapter (*supplied*).
4. Connect the Modem to the telephone line wall jack with a standard Phone Modem Cable.

Remote Connection and Setup

1. Make sure the host PC's modem is properly configured and connected to the telephone service.

Note: Windows Dial-up Networking modem configuration procedures may vary slightly between Windows 95, 98, ME, NT and 2000. Consult your Windows Help for specific Dial-up Networking procedures.

2. From the host PC, launch the Dial-up Networking "**Connect**" command with the appropriate phone number of the office where the IFM Card modem resides.
3. At the prompt, enter the following User ID and Password:

User ID: <panasonic>
Password: <password>

4. After you're successfully connected to the IFM Card modem, start your local internet browser.
5. Enter http://192.168.0.9 in the URL address field, and press **GO** or the **Enter** key.
6. The IFM **Monitor System** page should now appear on the remote PC browser window.

Panasonic®

Panasonic Telecommunication Systems Company

Division of Matsushita Electric Corporation of America
Business Telephone Systems Division

Headquarters

Two Panasonic Way
Secaucus, NJ 07094
(201) 392-4220