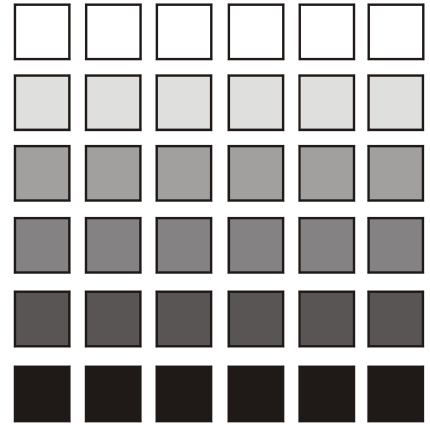


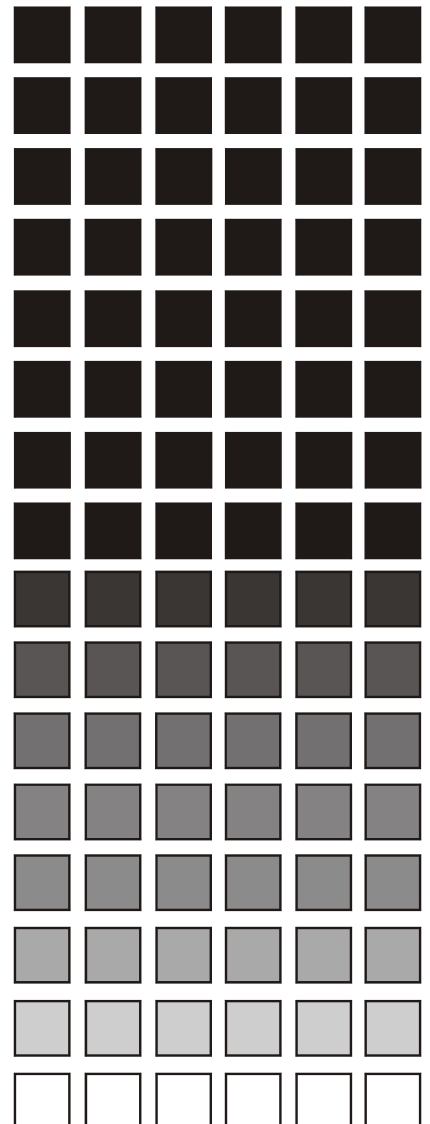
Panasonic

DBS 576
Digital Business System

Reference Manual
Supports DBS 576 & 576HD



**Integrated Feature Module (IFM)
External Modem Kit
VB-44191MKT**



The contents of this document are subject to change without notice and do not constitute a commitment on the part of Panasonic Telecommunication Systems Company (PTSC). Every effort has been made to ensure the accuracy of this document. However, due to ongoing product improvements and revisions, PTSC cannot guarantee the accuracy of printed material after the date of publication, nor can it accept responsibility for errors or omissions. PTSC will update and revise this document as needed.

The software and hardware described in this document may be used or copied only in accordance with the terms of the license pertaining to said software or hardware.

© 2002 by Panasonic Telecommunication Systems Company (PTSC)

All rights reserved.

Windows NT, Net Meeting, are registered trademarks of Microsoft Corp.
pcAnywhere is a registered trademark of Symantec Corp.
Zoom is a registered trademark of Zoom Telephonics, Inc.

Overview

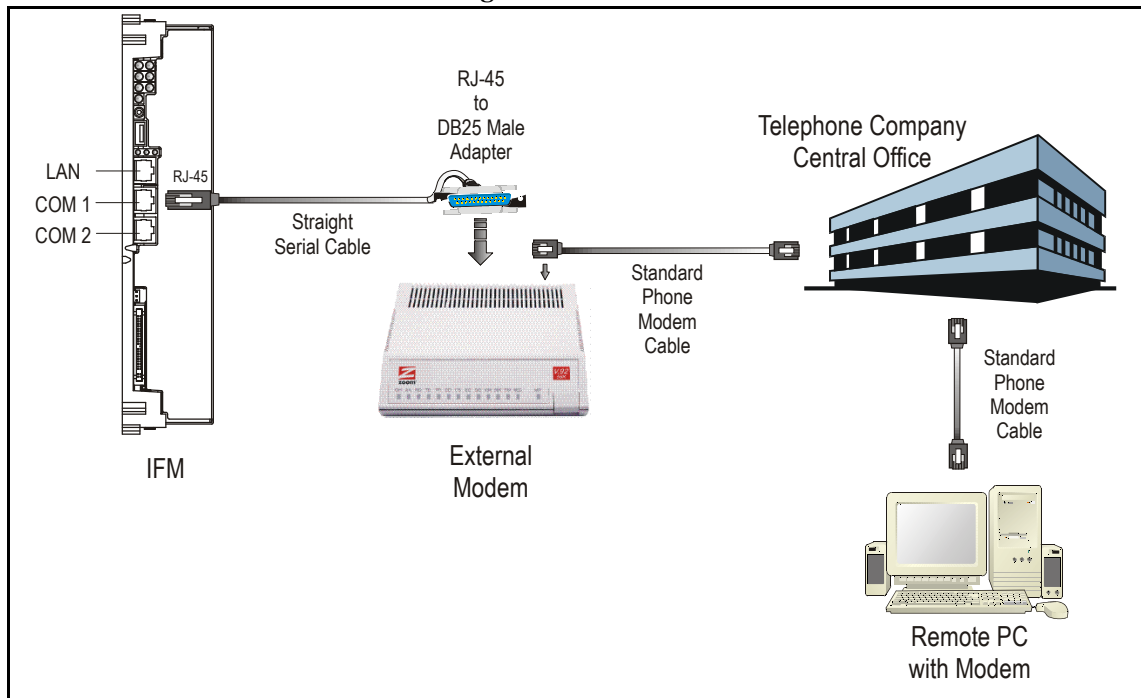
The VB-44191MKT IFM External Modem Kit provides the equipment you need to successfully connect your remote PC to the IFM by way of an external dial-up modem. This kit includes all of the following items:

Item	Description
Modem	ZOOM [®] /Fax Modem 56K External Model 2949
Host Connection Software (for IFM)	pcAnywhere [™] SYN PCA Windows [®] NT 10.0 CD HST RET
Cable	Standard Serial Cable, 8-conductor straight connect
Cable Adapter	RJ-45 female to DB25 male

Connecting Your Kit

Connect the VB-44191MKT kit items as shown below in Figure 1:

Figure 1. VB-44191MKT Connection Diagram



1. Connect one end of the Straight Serial Cable RJ-45 plug to COM 1 on the IFM.
2. Connect the opposite end to the Modem using the RJ-45-to-DB25 Adapter (*supplied*).
3. Connect the Modem to the telephone line wall jack with a standard Phone Modem Cable.

IFM-Side Setup

Note: *pcAnywhere* is pre-installed on the IFM Module and therefore does not require any software set up. However, an additional copy is provided with this kit (supplied CD) should you need to re-install it for any reason.

1. After connecting the devices as described in the previous section, power the Modem ON.
2. Power the DBS 576/HD ON (or make sure the IFM Card is inserted in the 576 cabinet and running properly).
3. Connect a laptop computer to the IFM using the IFM LAN port connector and crossover cable, and launch Microsoft's NetMeeting© program (*see Section 580 if you need details concerning IFM LAN port connection and NetMeeting setup*).
4. Double-click the **Symantec pcAnywhere** icon on the laptop desktop.
5. Right-click the **Modem** icon and choose **Launch Host**.
6. Note **Host Service** starts and after a short period connects the IFM to the modem.

Caution: *If you see the error message "error initializing modem," it usually indicates a system-level CPU usage problem related to the modem. Make sure the modem is powered ON, and that the modem cable is properly connected. After verifying proper modem operation, click OK from the error message window.*

Remote PC-Side Setup

1. Make sure the remote PC's modem is properly configured and connected to the telephone service.
2. Install a *remote software version* of pcAnywhere (*not supplied*).
3. Perform the following set-up procedures on the Remote PC:
 - Double-click the **Symantec pcAnywhere** icon on the Remote PC's desktop.
 - Click the **Remote Control** button.
 - Right-click **Modem** and then select **Properties**.
 - Under **Connection Info**, select the appropriate modem driver.
 - Select **Settings** and enter the telephone number in the **Phone Number of Host PC to Control** field.
 - Under **Security Options** tab, choose **None** as the encryption level (*default setting*).
 - Click **Apply** and **OK**.
4. Double-click the **Symantec pc Anywhere** icon.
5. Double-click the **Modem** icon and note that pcAnywhere connection service begins.
6. In the User Name and Password window, enter the following information:

Username: *IFM*

Password: *password*

7. The IFM application window should now be displayed on your Remote PC.

Panasonic®

Panasonic Telecommunication Systems Company

Division of Matsushita Electric Corporation of America
Business Telephone Systems Division

Headquarters

Two Panasonic Way
Secaucus, NJ 07094
(201) 392-4220