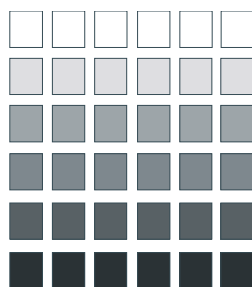
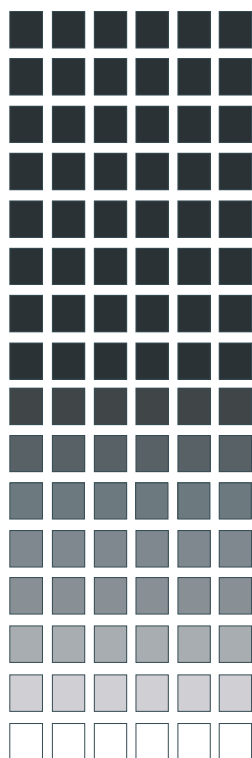


Panasonic®



Section 775
900 Mhz DBS Series
Cordless Telephone



545X03001C

DBS 576-DBS 576HD
Version 5.10
Issued April 2002

The contents of this manual are subject to change without notice and do not constitute a commitment on the part of Panasonic Telecommunication Systems Company (PTSC). Every effort has been made to ensure the accuracy of this document. However, due to ongoing product improvements and revisions, Panasonic cannot guarantee the accuracy of printed material after the date of publication nor can it accept responsibility for errors or omissions. Panasonic will update and revise this document as needed.

The software and hardware described in this document may be used or copied only in accordance with the terms of the license pertaining to said software or hardware.

Reproduction, publication, or duplication of this manual, or any part thereof, in any manner, mechanically, electronically, or photographically, is prohibited without permission of the Panasonic Telecommunication Systems Company (PTSC).

© Copyright 2002 by Panasonic Telecommunication Systems Company (PTSC).

All rights reserved.

Checking Your Package	1
Understanding Your Telephone	3
Handset Overview	3
Base Station Overview	5
Liquid Crystal Display (LCD) Overview	6
Handset Controls	7
Using Your Telephone	9
Using Your Handset	9
Answering An Incoming Call	10
Placing An Outgoing Call	10
Switching Calls Between Telephones	11
Programming Functions	13
Troubleshooting	17
Accessories	19
Additional Accessories	19
Precautions	21

Checking Your Package

Before reading the User Guide and using the Panasonic 900 MHz Cordless Telephone, take a few minutes to check the contents of your package. You should have the following:



Handset



Base Station with
AC Adapter



Wall Plate



Charging Unit with
AC Adapter

Checking Your Package



Two 500 mAH
Rechargeable Batteries

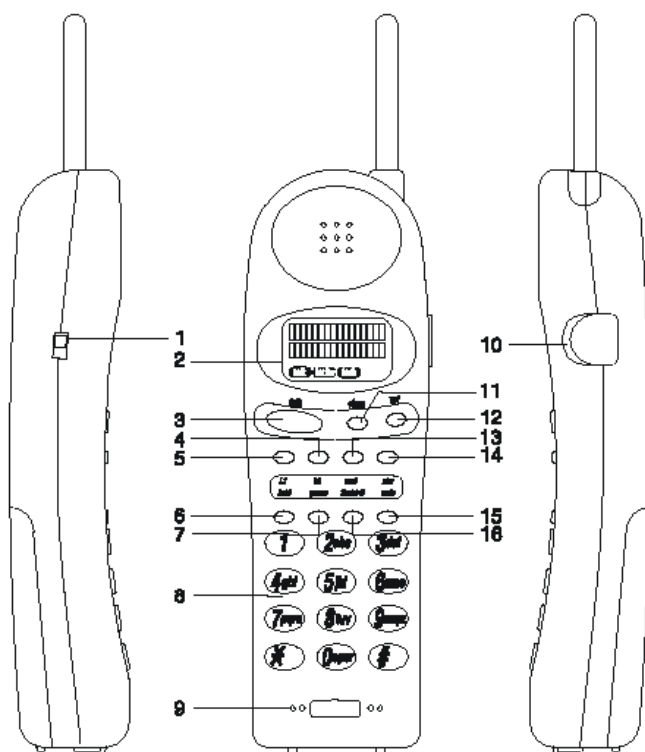


Belt Clip

Understanding Your Telephone

HANDSET OVERVIEW

Please see page 4 for a description of your phone's features and display keys.

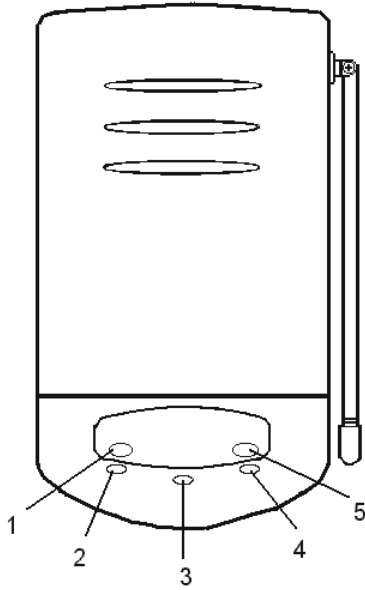


Understanding Your Telephone

#	Function
1	Ringer ON/OFF switch
2	Message display
3	Talk (talk) key
4	FF-2 Key (programmable)
5	FF1- Key (programmable)
6	FF-5 Key (programmable)
7	FF-6 Key (programmable)
8	Numeric keypad
9	Microphone
10	Headset jack (2.5mm standard jack)
11	Channel (chan) key
12	Volume (vol) key
13	FF-3 key (programmable)
14	FF-4 key (programmable)
15	Mute (MUTE) key
16	Hold (HOLD) key

Understanding Your Telephone

BASE STATION OVERVIEW



#	Function
1	Cordless Button
2	Cordless LED
3	Status LED
4	Desk LED
5	Desk Button

Understanding Your Telephone

LIQUID CRYSTAL DISPLAY (LCD) OVERVIEW

The 900 MHz handset has a two line LCD display. Each line displays up to 16 alphanumeric characters. While in Battery Save mode the base station does not send LCD information to the 900 MHz handset while it is idle, except in the following cases.

- When the 900 Mhz handset has a call holding.
- If the base station detects the key telephone has a call holding.

If the base station detects either condition above, the first line of the LCD is idled and the second line displays the identity of the party on hold. If a holding call isn't detected, the LCD is cleared immediately after the base station is set to IDLE. If the 900 MHz handset is idle and a holding call is disconnected, the LCD goes blank.

The base station memorizes the last first and second lines of the LCD. This feature allows the 900 MHz handset to re-display information about the last call. When the base station receives either first or second lines of information from the DBS while the 900 MHz handset is in use, it replaces the memory, and sends both first or second lines of data to the handset.

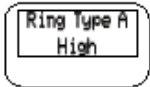
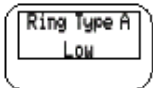
When placing a call the base station does not send display updates, it displays the number you are dialing. When an incoing call is received, the base station transmits the LCD information to the 900 MHz Handset.

Understanding Your Telephone

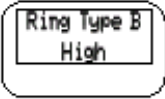
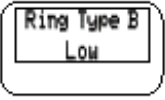
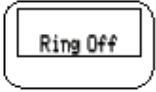
When the 900 MHz handset goes idle, the handset LCD is cleared. When the base station updates the second line of the LCD, the first line is also cleared.

HANDSET CONTROLS

Note: Operate this handset only when it is not in the charging unit.

Condition	Action	LCD Display
Handset Active (talk mode)	Press vol on the front of the handset to select a high or low earpiece volume level.	Non display indications
Handset Inactive (standby mode)	Press vol on the front of the handset to select one of the following settings:	
	Ring type A (High)	
	Ring type A (Low)	

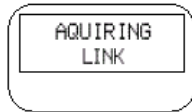
Understanding Your Telephone

Condition	Action	LCD Display
Handset Inactive (standby mode)	Ring type B (High)	
	Ring type B (Low)	
	Ring Off (Vibrate)	

Using Your Telephone

USING YOUR HANDSET

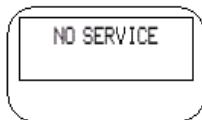
When you pick up the handset and press TALK, you will see:



Or you may see one of the following:

Condition	Indicator	LCD Screen
No connection to base	error tone	NO SERVICE
Channel busy	error tone	NO DISPLAY INDICATION

If the base station is powered off, the handset will display:



Using Your Telephone

ANSWERING AN INCOMING CALL

If the handset is in the charging unit when you receive a call:

- Pick up the handset and remove it from the charging unit. (The AutoTalk feature allows you to answer the call immediately.)
- When you finish the call, place the handset back in the charging unit. (The AutoStandby feature automatically ends the call.)

If the handset is out of the charging unit when you receive a call:

- Press **TALK** or any key on the numeric keypad.

PLACING AN OUTGOING CALL

When making an outgoing call from the 900 MHz handset:

- Press **TALK**. You will hear a dial tone.
- Enter the number you are calling.
- To end the call, press **TALK**.

SWITCHING CALLS BETWEEN TELEPHONES

The 900 MHz cordless telephone base station allows you to switch calls from either the 900 MHz handset or the key telephone.

Caution: Do not press the buttons labeled "Desk" or "Cordless" on the base station when receiving a call. Doing so may disconnect the call.

Switching a call from the 900 MHz handset to the key telephone

To switch a call from the 900 MHz handset to the key telephone during an active call:

1. Press HOLD on the 900 MHz handset.
2. Press the labeled "desk" button on the base station.
3. Pick up the receiver on the key telephone.

Note:

- When the base station is operating with the key telephone, and you press the 900 MHz handset TALK button, there is no tone from the 900 MHz handset. The 900 MHz handset displays LINE IN USE for 5 seconds.
- When the base station is powered off, the handset does not function.

Switching a call from the key telephone to the 900 MHz handset

To switch a call from the key telephone to the 900 MHz handset during an active call:

Using Your Telephone

1. Press HOLD on the key telephone.
2. Press the labeled "desk" button on the base station. (see # "2" above)
3. Press TALK on the 900 MHz handset.

Note:

- If you are on an active call on the key telephone and you press the button labeled "handset" on the base station without first pressing the **HOLD** button on the key telephone, your call will be disconnected.
- If you are on an active call on the 900 MHz handset and you press the desk button on the base station without first pressing the HOLD button on the key telephone, the transfer between phones waits until the call is completed. (Avoid this practice.)

Programming Functions

Handset button default assignments

FF1

FF2

FF3

FF4

AUTO

PROG

HOLD

MUTE

The 900 MHz handset has 6 function keys (FF1~FF6) that are programmable using the Program mode. Only 4 keys (FF1~FF4) have the capability of displaying LED indications therefore, they are the only keys that can be programmed as Feature Function (FF) keys.

For the DBS 96/72/90 and the DBS 824, LED indications of calls are only available if the handset and desk telephone FF Keys are programmed as CO keys.

F-Key Type	Location	Display/Complete message
**Direct CO key/FF-key (Default)	FF1	FF-KEY 01
	FF2	FF-KEY 02
	FF3	FF-KEY 03
	FF4	FF-KEY 04
	FF5	AUTO KEY
	FF6	PROG KEY

Programming Functions

F-Key Type	Location	Display/Complete message
One Touch (OUTCH) keys 1-10	Anywhere (FF1-FF6)	OTCH xx(xx=01-10)
Flash key		FLASH KEY
CONF key		CONF KEY
PROG key		PROG KEY
AUTO key		AUTO KEY
Redial key		REDIAL KEY
Soft-key (mode)		MODE KEY
Soft-key (<EXEC)		EXEC>KEY
Soft-key (End)		END KEY
Soft-key (<EXEC)		<EXEC KEY
No operation		NO OPERATION

Note: The TALK button on the handset must be pressed to scroll through System Speed Dial (SSD) and Personal Speed Dial (PSD) addresses using the * and # keys. The TALK button must also be pressed for the programmed FF keys to function.

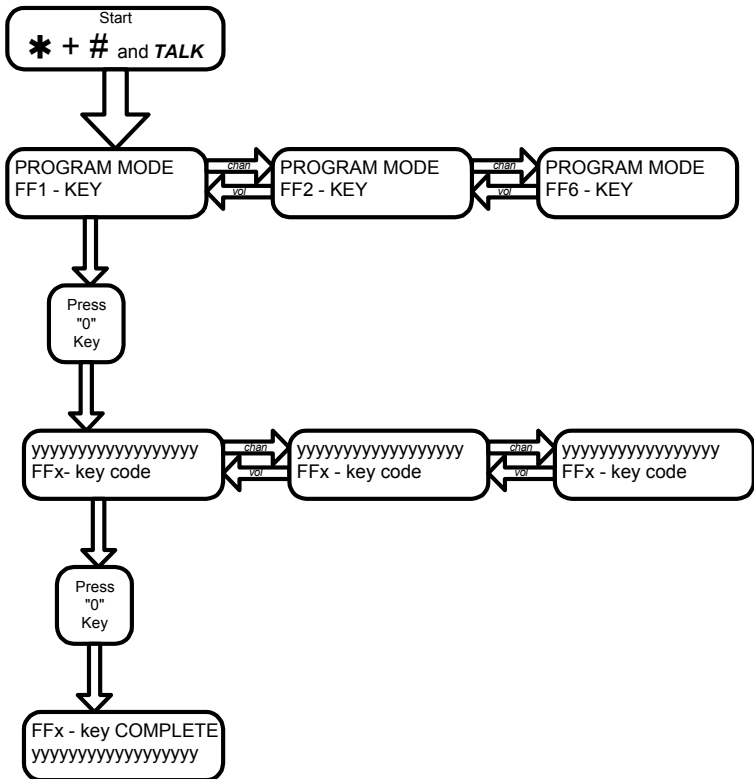
To enter the 900 MHz handset programming mode from idle, press the Q, # and the **TALK** button at the

Programming Functions

same time and hold for five seconds. You will hear a beep confirming you are in programming mode.

After you have entered the programming mode, the handset will default to program the FF1 key.

Note: You can scroll through key selections by pressing the "chan" key, or move backwards by pressing the "vol" key.



When the desired program is shown on the display,

Programming Functions

press the "0" key on the keypad to confirm your selection. Next, select the program function you would like to assign to the FF key you have just chosen, by pressing the **vol** and **chan** key to move through the selections. Once you've chosen the desired function, press the "0" key on the keypad to confirm your selection. Your handset will display COMPLETE next to the assigned key number and the function assigned to that key. You can then begin programming the next FF key.

Note: To exit the programming mode at any time, press the TALK key.

Troubleshooting

If your 900 MHz cordless telephone is not performing to your expectations, try these steps. If you are still unable to resolve the problems, contact your PBX Administrator.

Note: Do not attempt to service this unit yourself. All service must be performed by qualified service personnel.

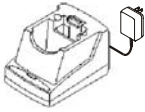
Problem	Suggestion
<p>Charge light won't come on when headset is placed in Charging unit.</p>	<ul style="list-style-type: none"> • Make sure the AC adapter is plugged into the base and wall outlet. • Make sure handset is properly seated in charging unit. • Make sure the sealed lead-acid battery is properly placed in the handset. • Make sure the charging contacts on the handset and charging unit are clean.
<p>Conversation is interrupted frequently.</p>	<ul style="list-style-type: none"> • Make sure the base antenna is fully vertical. • Move closer to the base. • Check for LOW BATT warning.

Troubleshooting

Problem	Suggestion
Warning on and NO SERVICE message Warning on and NO DISPLAY INDICATION message	<ul style="list-style-type: none">• Move closer to the base. • Select a different channel on your handset.
Handset does not ring	<ul style="list-style-type: none">• Sealed lead-acid battery may be weak. Charge the battery for 5-6 hours.• Make sure the base antenna is fully vertical.• The handset may be too far away from the base.• Ensure the ringer ON/OFF switch is in the ON position.

Accessories

ADDITIONAL ACCESSORIES



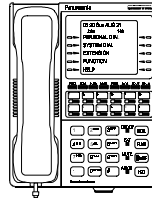
Charger and AC Adapter



Leather Case



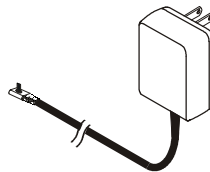
Headset



Key Telephone



**500 mAH
Rechargeable
Battery**



AC Adapter

This page intentionally left blank.

Precautions



Warning: This installation information is designed for experienced technicians only and is not designed for use by the general public. It does not contain warnings or cautions to advise non-technical individuals of potential dangers in attempting to install a product. Products powered by electricity should be installed or serviced only by experienced professional technicians. Any attempt to install or service the product or products dealt with in this installation information by anyone else could result in serious injury or death.

Battery Recycling Statement



The following statement applies if you purchased backup batteries with your system.

The product you have purchased may contain sealed lead acid batteries, which are recyclable. At the end of their useful life, under various state and local laws, it is illegal to dispose of these batteries in your municipal waste stream. Please call:

1-800-SAV-LEAD for information on how to recycle these batteries.

This page intentionally left blank.

Panasonic[®]

Telecommunication Systems Company

**Division of Matsushita Electric Corporation of America
Business Telephone Systems Division**

Headquarters

Two Panasonic Way
Secaucus, NJ 07094
(201) 392-4220

Printed in USA

04/2002

Part No. 545X03001C